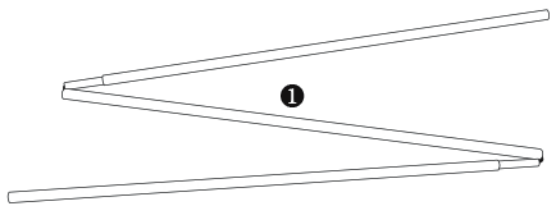
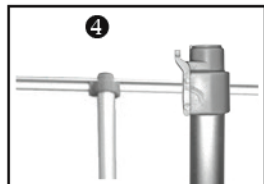
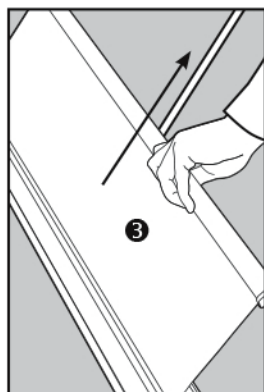
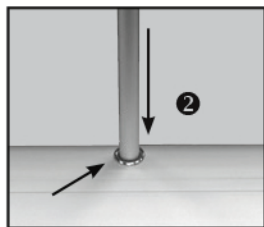


Deluxe Retractable Display Instruction Sheet



To set up your Retractable Display:

1. The bungee pole comes in 3 sections attached with an internal bungee cord (1). Assemble pole by allowing sections to unfold and inserting the pole sections into one another.
2. Insert the pole into the receiver in the center back of the display. Be sure that the pole is securely seated into the receiver (2).
3. While securing the pole with one hand, pull display top up from the display base (3). Pull the display up the full length of the pole.
4. Once the display face is fully extended, insert the plastic hook on the top of the pole into the slot on the top crossarm (4). A slight rotation of the crossarm will help ease the hook into the slot.



To take down your Retractable Display:

1. Unhook the display top from the top of pole.
- DO NOT LET GO OF THE DISPLAY TOP! This will cause it to snap back to the base and damage your display!***
3. *Carefully* lower the display panel until it is fully retracted into the display base.
 4. Disassemble the pole by pulling it apart and folding its 3 sections together for storage.

